

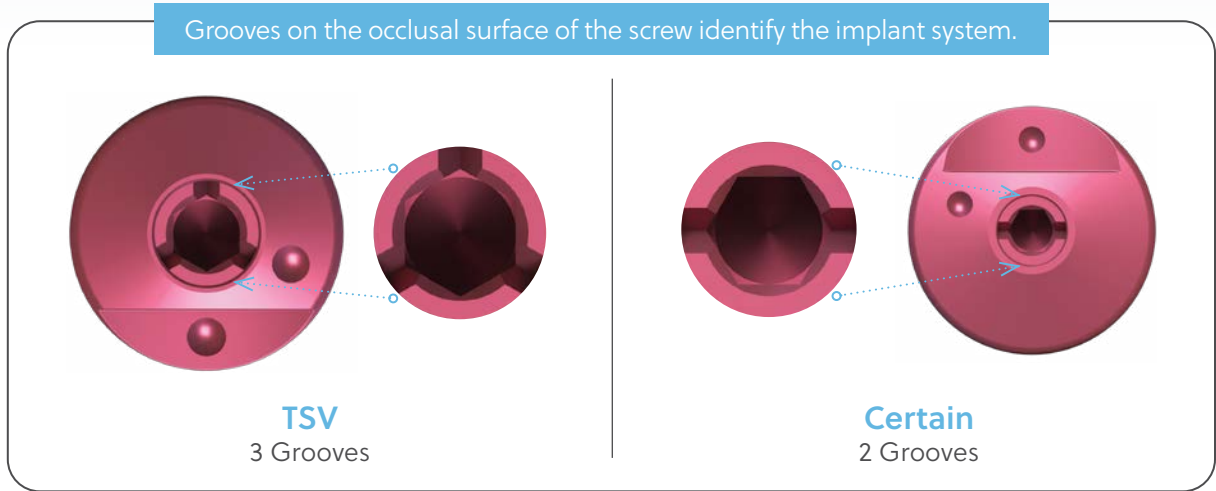
# The Encode® Emergence Impression System

## Healing Abutments

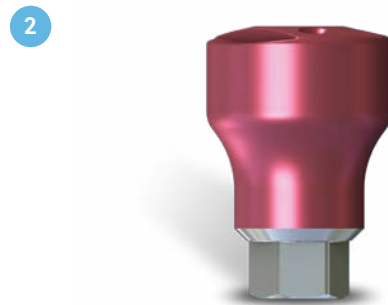
### Surgical Placement

The **Encode Emergence Healing Abutment** is a 3-in-1 two-piece healing abutment/impression coping/scan-body designed to facilitate gingival tissue healing and consists of an abutment and retaining screw that are assembled together.

Encode Emergence Healing Abutments have the Encode coding scheme on the occlusal surface and a hex connection at the base of the healing abutment that engages the hex with the implant for orientation and anti-rotation.

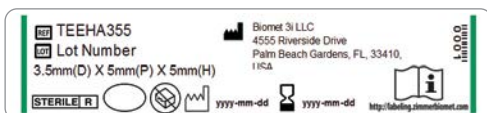


Following implant placement, select an Encode Emergence Healing Abutment with the appropriate restorative platform diameter, emergence profile, and collar height.



Use wide Encode Emergence Healing Abutment(s) to ensure the final abutment will seat easily without excessive blanching of the soft tissue. Bone profiling may be required to fully seat the healing abutment, particularly in cases with sub-crestal implant placement deeper than 1 mm.

**Note:** Please ensure that the instructions for use are made available to the restorative clinician and use the patient chart labels located in the package of the Encode Emergence Healing Abutment.



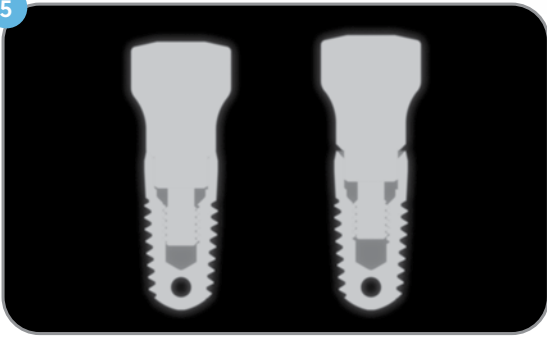
For instructions for use: [ifu.biomet3i.com](http://ifu.biomet3i.com)

3



Use an Encode Emergence Healing Abutment that stands taller than the surrounding soft tissue so all sides of the occlusal Healing Abutment are clear to facilitate proper traditional or digital impression and subsequent scanning.

5



Following placement, confirm that the Encode Emergence Healing Abutment is fully seated on the implant with a radiograph.

4

Implant System	Driver Part Number
TSV	HXGR1.25 and HXLGR1.25
Certain	PHD02N and PHD03N

Pick up the Encode Emergence Healing Abutment(s) using a hexed driver (see list in table above) and place the healing abutment on the implant and hand-tighten.



6



Once fully seated, torque the healing abutment screw to 20 Ncm using a restorative torque wrench and torque wrench hex driver (see list in table below). Where applicable, suture the soft tissue around the Encode Emergence Healing Abutment.

Implant System	Torque Wrench	Driver Tip
TSV	TWR	TW1.25 or TW1.25L
Certain	L-TIRW	IHX1.2D, RASH3N, IXL1.2D or RASH8N



Contact us at 1-800-342-5454 or visit [ZimVie.com](http://ZimVie.com)

ZimVie Dental  
 4555 Riverside Drive  
 Palm Beach Gardens, FL 33410  
 Tel: +1-561-776-6700  
 Fax: +1-561-776-1272

Unless otherwise indicated, as referenced herein, all trademarks and intellectual property rights are the property of ZimVie Inc. or an affiliate; and all products are manufactured by one or more of the dental subsidiaries of ZimVie Inc. (Biomet 3i, LLC, Zimmer Dental, Inc., etc.) and marketed and distributed by ZimVie Dental and its authorized marketing partners. For additional product information, please refer to the individual product labeling or instructions for use. Product clearance and availability may be limited to certain countries/regions. This material is intended for clinicians only and does not comprise medical advice or recommendations. Distribution to any other recipient is prohibited. This material may not be copied or reprinted without the express written consent of ZimVie. ZVINST0005 REV B 06/23 ©2023 ZimVie. All rights reserved.

